

# PhD-bar Solution

IMPLANT BAR SUPERSTRUCTURE AND DEDICATED ATTACHMENTS

## Solution 1

### Digital Mild Bar | Zirconia All-on-X

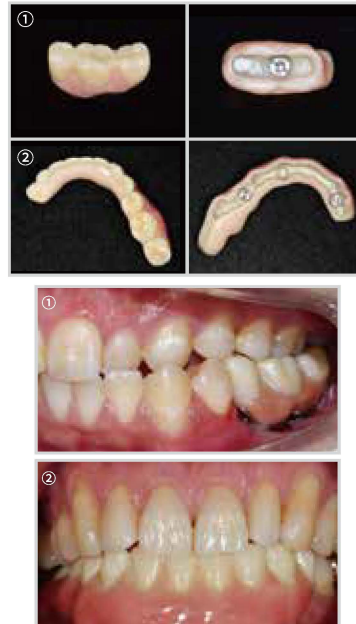
Free-detached all-on-X with zirconia fixed prosthetics without allowing movement



## Solution 2

### Digital Mild Bar | Zirconia Partial Prosthetics

Free-detached zirconia aesthetic prosthetics used partially edentulous areas with severe bone resorption with adequate number and distribution of implants



## Solution 3

### Digital mill bar | Overdenture

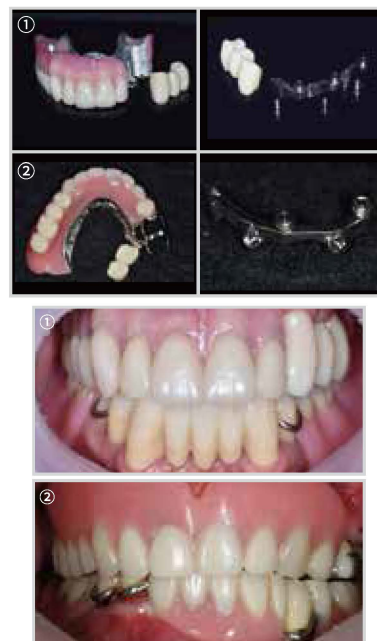
Overdenture using resin material with fixed prosthesis function that doesn't allow movement



## Solution 4

### Digital mill bar | Partial denture

If bone resorption is severe in the partial edentulous jaw and the implant locations are abnormal, the implants supported partial denture with less movement can be applied.



# PhD-bar Solution

IMPLANT BAR SUPERSTRUCTURE AND DEDICATED ATTACHMENTS


- It can be applied to repair the implants fixed prosthesis with some failed implants. If the number and position of remained implants are proper to make rigid type prosthesis (without movement), these overdenture and zirconia detachable prosthesis with milled bar and dedicated attachment can make a good prognosis.
- Aesthetic prosthesis made with high-strength zirconia block can be produced by CAD/CAM.
- There are no screw, no cement, and no screw holes on the occlusal surface in this prosthesis. But it's possible to detach whenever the patient or dentist want to remove this prosthesis for check or cleansing.





Product  descriptions



## Specifications

We also provide universally-used abutment that can be used in resilient type implants overdenture. Locator or Kerator attachment can be compatible with this abutment.

Abutment			
Type	① Connection	② G/H (mm)	Remark
<div><div><div>②</div><div>①</div></div></div> <div>Solitary</div>	Standard ( LCAS40XX )	2 / 3 / 4 / 5 / 6 / 7 / 8	Compatible with all internal submerged implant fixture with 11° morse taper
	Mini ( LCAM35XX )		Only applicable to Osstem (or Hiossen) Mini Implants

Attachment	
KERATOR MALE CAP SET	
	<div><div>2.4lbs</div><div>1.2lbs</div><div>0.5lbs</div></div> <div></div>
Metal Housing 1 ea	Male Cap 3 ea